

Far From The Tree Playlist

Line Without A Hook



By Ricky Montgomery

This song relates to the relationship between Joaquin and Birdie. One of the lines in the song goes: “she’s a lady and I am just a line without a hook.” I think this line basically sums up why Joaquin broke up with Birdie, because he thought there would be so many things he couldn’t give her just because of the life he came from.

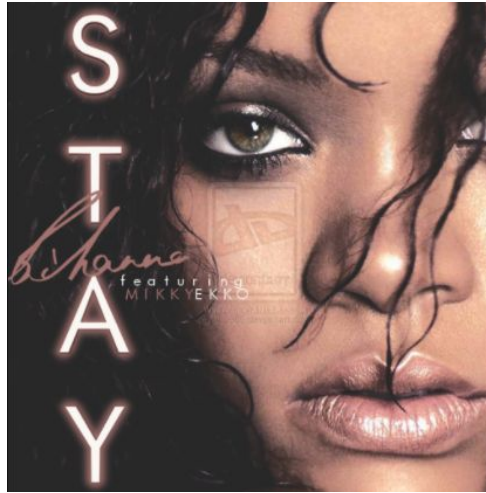
Ode To Joy



By Ludwig Van Beethoven

I chose this song because it is what plays when Grace rings the doorbell at Maya’s house when she is meeting her for the first time. I think it really captures how out of place Grace and her family feel at Maya’s house because of how fancy and proper Maya’s parents are. I feel like if Far From The Tree was a movie this song would be playing in the background while they are all eating dinner together that night, it would show how awkward and forced the whole situation was.

Stay



By Rihanna

There is a line in the song that goes “the reason I hold on, ‘cause I need this hole gone.” I think that line really sums up Grace and Rafe’s relationship because Grace is still emotionally unstable from losing Peach (Millie) and Rafe helps fill the hole in her heart that was left by Peach.

Lost Boy

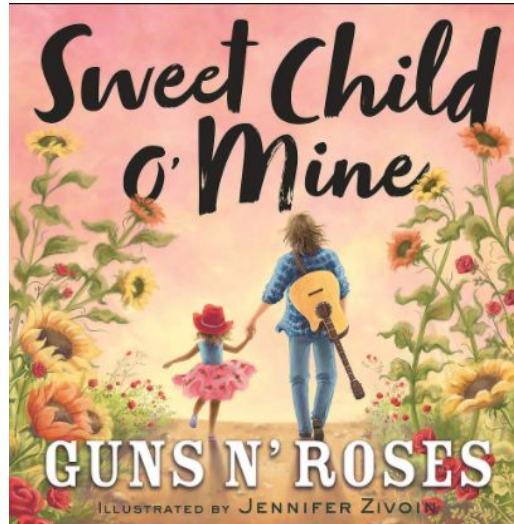


By Ruth B.

This song represents Joaquin’s life, and him finding Mark and Linda. The song is about a lost boy who has always been by himself, and this is Joaquin because he has never really had a family. There is a line in the song that says “there was a time when I was alone, nowhere to go and no place to call home.” This line stuck out to me because it represents Joaquin’s life, he

has never had a home. In the song the lost boy is found by Peter Pan, and this represents Joaquin being taken in by Mark and Linda.

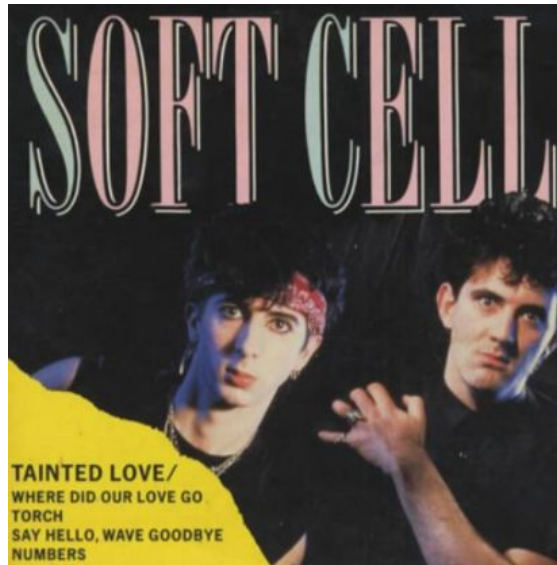
Sweet Child O' Mine



By Guns N' Roses

This song is about a parent's love for their daughter, about how they just love her so much. I think this represents the deep love that Grace feels for Millie, even though she had to give her up. When the song says "Now and then when I see her face she takes me away to that special place and if I stare too long, I'd probably brake down and cry." I think this is like how Grace loves Millie so much but she can't have her and be with her, and it's hard for Grace to look at all of the pictures of Millie because it just makes her think of what ifs.

Tainted Love



By Soft Cell

The song Tainted Love represents Grace and Max's relationship. It is about a love she thought she had for Max but really she just loved the idea of him. The line "Once I ran to you, now I'll run from you," is like how Grace was once in love with Max, or at least she thought she was, but now she knows better and she is able to see how bad that relationship was for her.

Brave



By Sara Bareilles

This song feels like an ending to the book because in the end everyone did something brave. Joaquin let Mark and Linda adopt him, Grace was able to love again after being so hurt by Max and the loss of Peach, and Maya was able to give her mom another chance to redeem herself. "Say

what you wanna say and let the words fall out honestly I wanna see you be brave,” is the line that stuck out to me the most because in the end everyone said what they needed to say, and they were