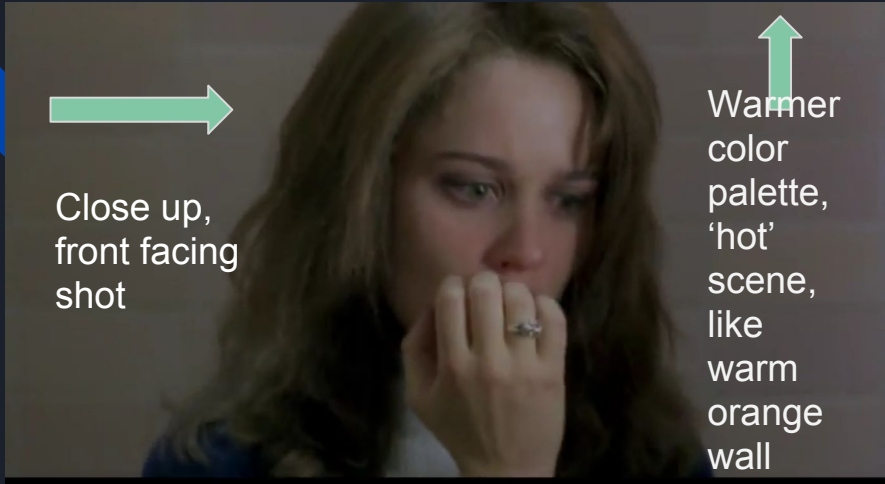




The Craft as a Spike Lee joint

Seyni Ndaw



Close up,
front facing
shot

Warmer
color
palette,
'hot'
scene,
like
warm
orange
wall

Spike Lee uses a lot of dolly shots, so that could be utilized when Sarah rushes into the bathroom and sits down in the stall, then transitioning to a close up



The close up will emphasize the range of Sarah's emotion and showcase her fear, feeling the change in her group and how it may affect her. Changing the color palette would work with this close up to intensify the feel of this scene

Dialogue:
"There you are! We've been looking everywhere for you."



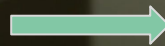
Low angle shot to establish power dynamic, warmer colors



High angle shot



Use of lighting to create shadows to make Nancy, Bonnie and Rochelle look more intimidating

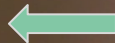


Low angle

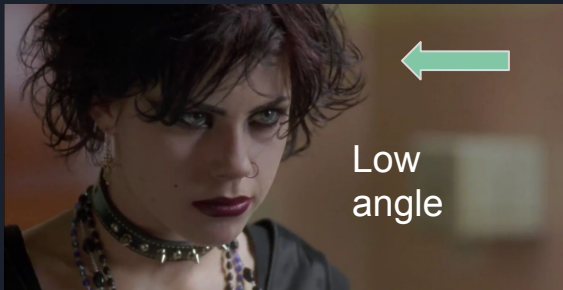


Dialogue:
"Are you ok?"
"Yeah, I'm fine."

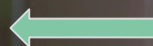
Swap out dim, dull and pale/earthy tones with warm, vibrant tone to establish intense emotion among characters, especially Nancy



Low angle



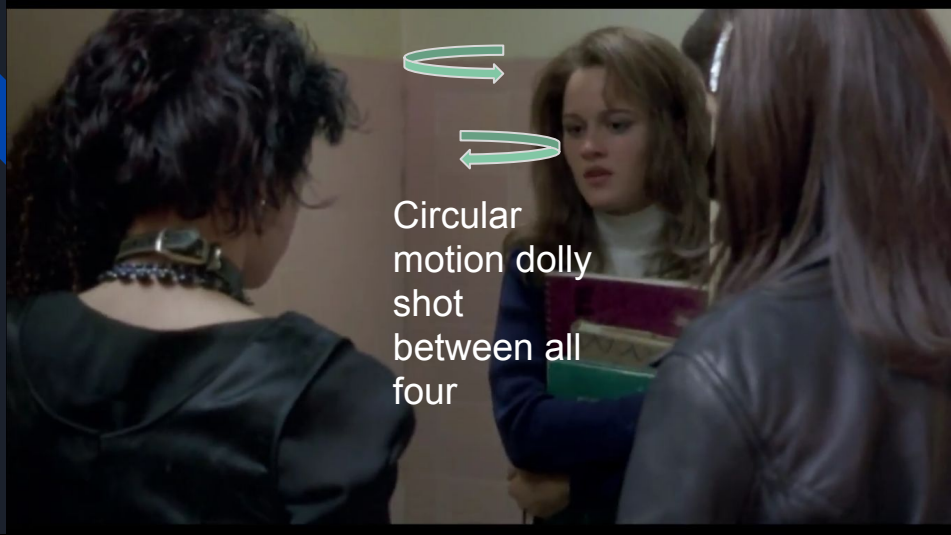
Tan walls could be warm orange for ex.



Low angle



Dialogue:
"Yeah, well I didn't tell them anything," "Than why do you want to leave the circle?" "I didn't say that." "You don't have to."



Circular
motion dolly
shot
between all
four

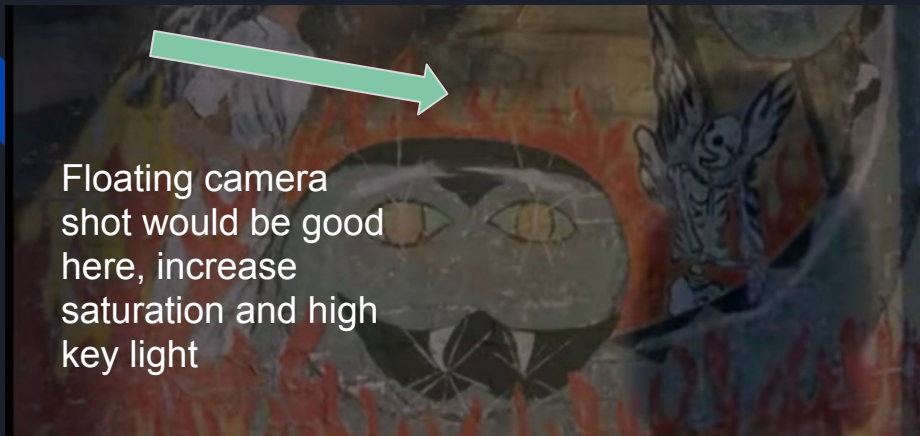


Again, replace dull, pale
coloring with something
more vibrant

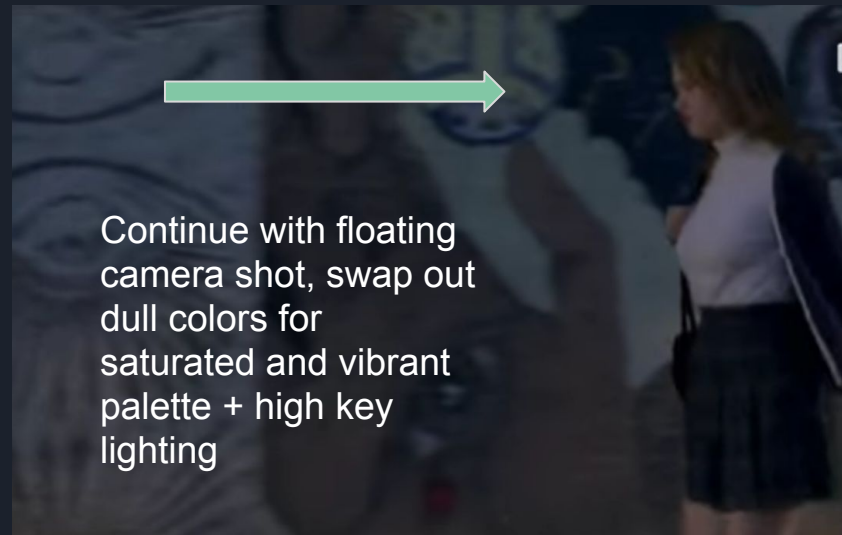
Dialogue:

“We don't really need
a fourth anymore, do we?
But if you're gonna leave
the circle...you might want
to think
about leaving the school.”

The existing colors could be more
saturated and bright.
This scene is mostly diegetic with a
small bit of suspenseful violin when
the door is being unlocked. I would
place a song in this scene,
something ominous sounding but
not a score, a song w/ lyrics.



Floating camera shot would be good here, increase saturation and high key light



Continue with floating camera shot, swap out dull colors for saturated and vibrant palette + high key lighting



Color palette will stay the same but more saturated and brighter



Increase saturation, higkey lighting

Dialogue: "They're trying to use magic against me. You don't understand. They killed people."



The shadows are good, increase them on the side they're on



Zoom in to the curtain, more saturation and high key lighting




Same note w/ the shadows

Dialogue: "What is this? This temple is built on a place of power. Sarah, you have a tremendous light inside you... more than any witch I've ever known."



Justification

My reason for choosing The Craft to turn into a Spike Lee joint has a lot to do with the power dynamics in the film. When watching Do the Right Thing, Spike Lee would display power shifts using low and high angle shots. For example, Radio Raheem was often viewed from a low angle shot, looming over all others around him. I wanted to display a similar feel with characters like Nancy, who is always trying to establish her dominance among the others in her circle. She is a looming presence over Sarah at all times, making Sarah grow paranoid and fearful of her life after attempting to bind Nancy's powers. I focused a lot on low and high angle shot opportunities in this scene because this was the focal point of the dynamic change among the four 'friends'. I still made sure to address possibilities of color changes. 'Hot' and 'cold' scenes are also common in Spike Lee films as he utilizes color palettes to signal what kind of feeling or event may take place. The feeling in the scene I chose from The Craft is very intense, intimidating and therefore 'hot'. So, I wanted to apply that to the scene which comes across as very 'cool' with its given color palette.



The original Craft film is composed of a lot of establishing, medium and two shot shots. Any shots with a subject are at eye level with the exception of a few scenes that have low and high angles. Also, most of these shots are pans with the exception of one or two tilts. Majority of scenes have low key lighting, especially as the film progresses and Nancy's dark behavior takes over her coven, translating into the overall lighting of the film. Cuts are the most common transitions from shot-to-shot in this film. The film features a sound track but most of it is composed of diegetic noise. As noted in my labels, to make this film seem more like a Spike Lee film I would make most of those medium and two shots to be close ups and would use high and low angles more through the film. The lighting would be more highkey instead of lowkey, and more shot-reverse-shot cuts would be used instead of primarily standard cuts. There are some moments in the original film that could resemble Spike Lee's techniques as is. For example, the scene where Sarah dreams about her three friends attacking her. Rochelle, Bonnie and Nancy are levitating above her being seen from a low angle whereas Sarah is below them being seen at a high angle. I would make more scenes follow this structure, for the power dynamic represented in that scene is very apparent throughout the whole film. I first chose the film because I thought it was starkly different from any of Spike Lee's works, but once looking into it they're actually not that far off. The Craft caters more to the high school drama genre whereas Spike Lee is more socially aware, but the power dynamics and character personalities resemble each other between The Craft and his films.