

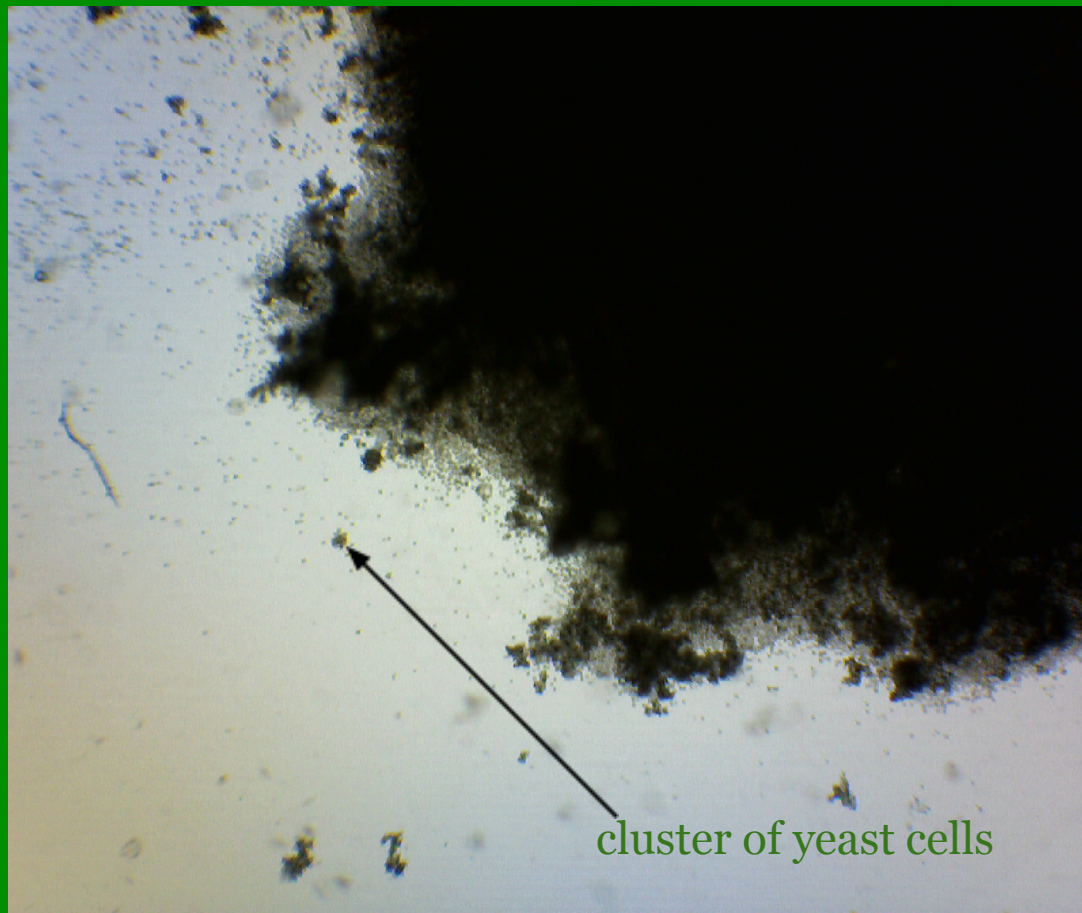
Q2 Microscopy: Mini-Portfolio

Crystalle Hutchins,
Kennedy Coverdale, Nia
Hammond, Jeremiah
Cunningham

Red Stream

Yeast Cells

Figure 1a: Yeast at 40x, 11-29-11

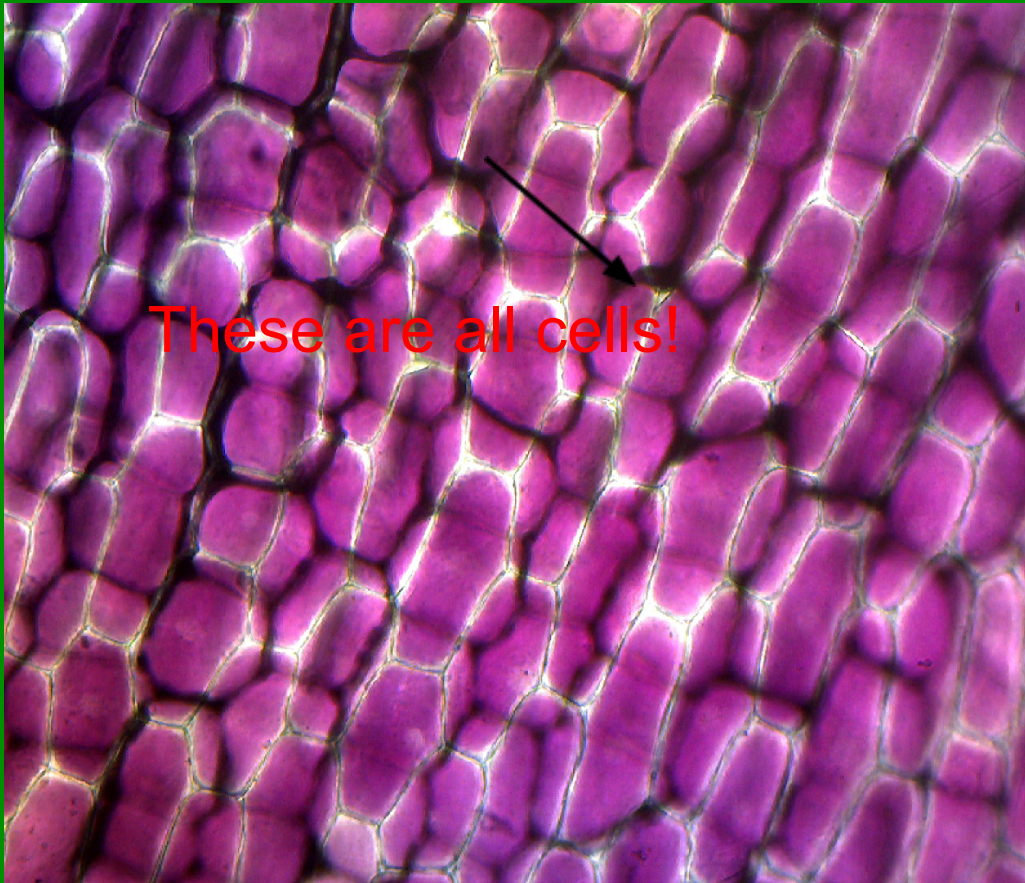


- Bubble-shaped
- Clustered, doesn't look like cells
- Some isolated cells

Red Onion Cell

(in saltwater)

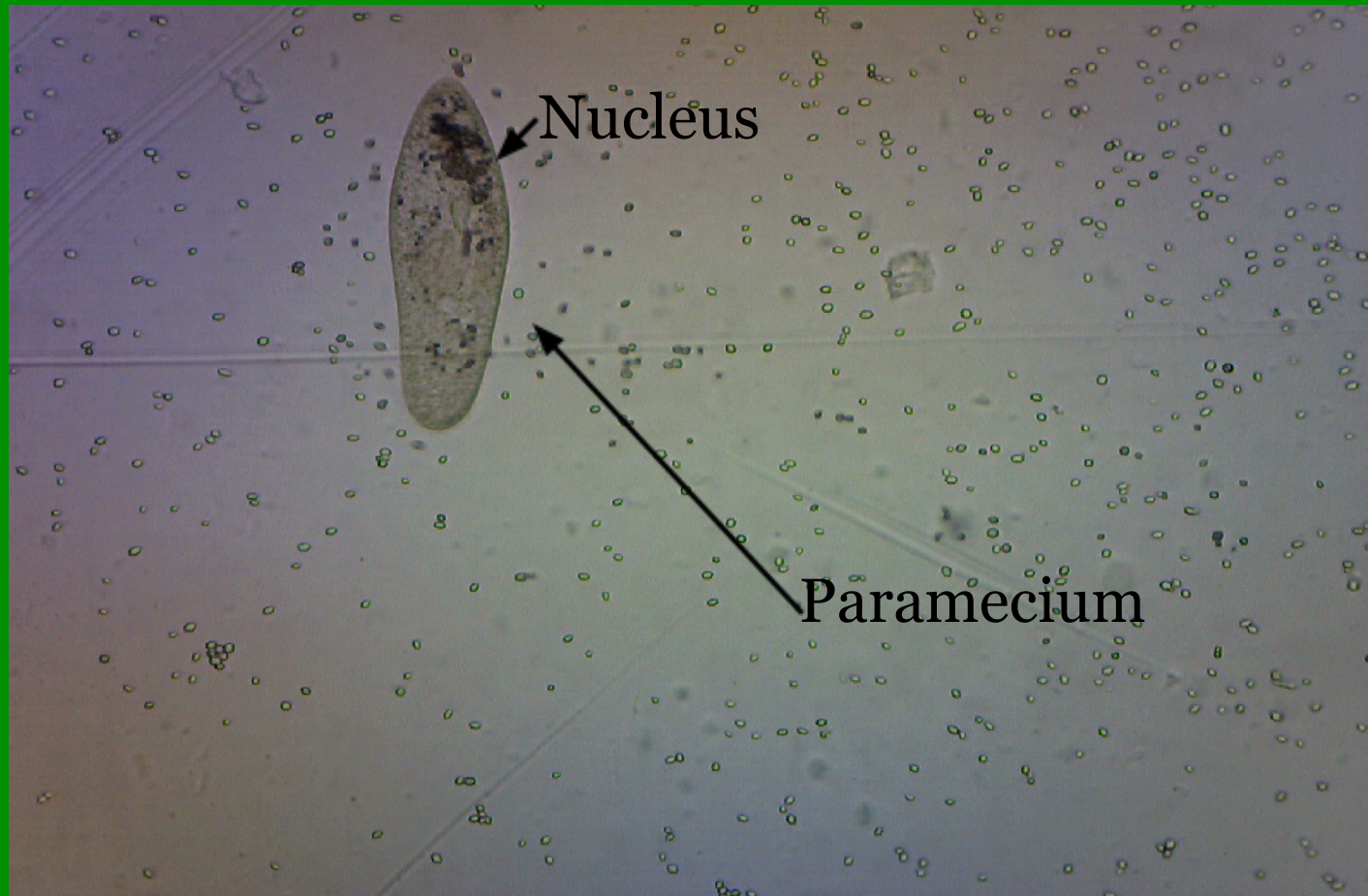
Figure 3b: Red Onion Cell in saltwater at 100x, 1-18-12



- Color more visible than in fresh water
- Cell wall less visible when in fresh water.
- Nucleus is visible, darker round dot

Paramecium

Figure 8: Paramecium at 400x, 1-11-12



Concept

These three slides were chosen to be presented because they were clear and best represented the microscopic images studied in class. Because the purpose of the Microscopy Portfolio was to share what the human's naked eye could not see, these three slides helped us to accomplish that goal.